

ESSENCE SERIES

HEADERLESS ROLLING SHOWER DOOR SYSTEM

NEW!

- Headerless System Offers Popular Frameless Look
- Bottom Rolling System Has Integrated Height Adjustment
- Rollers Include Anti-Derail/Anti-Pinch Guard
- Choice of Rounded or Square Style Roller System
- For Use Only With 1/2" (12 mm) Thick Tempered Glass (Not Included)

AVAILABLE IN FOUR STOCK FINISHES



Our **NEW** Essence Series allows a headerless appearance by utilizing a bottom rolling system that includes an anti-derail/anti-pinch guard feature. The bottom rollers also have an integrated height adjustment for door to vertical jamb alignment. By being completely header-free, a frameless vertical and horizontal appearance is achieved. Smooth and quiet operation of the door is the cornerstone of this bottom rolling unit. At the same time, excellent water management is accomplished at the sill via the bottom track, and vertically with the use of a clear L-shape jamb having a soft seal/bumper.

With your separate addition of a free standing shower head and valves, new configurations are possible, such as beautiful island designs, U-shaped designs, and L-shaped designs with unconventionally placed plumbing walls.

The Essence Series Frameless Sliding Shower Door System is for use only with 1/2" (12 mm) thick tempered safety glass (not included). It is stocked in four popular finishes, with a choice of rounded or square corner rollers.

Sold in a Basic Kit that allows both 180 degree and 90 degree installations, the user simply orders the necessary Brackets, and Handle or Knob separately to complete the installation. See the important **HOW TO ORDER** section at the bottom right of this page.

SPECIFICATIONS:

Glass Thickness Range: 1/2" (12 mm) Tempered Safety Glass (Not Included)

Material: Rollers and Top Guide Constructed of Solid Brass; Bottom Sliding Track and U-Channel Constructed of Aluminum; Clear Plastic L-Jamb

Maximum Door Size: Do Not Exceed Either 34" (864 mm) Wide or 127 Pounds (57.6 kg)

Basic Kit Fabrication: Notch Required for Bottom Rollers, Holes Required for Top Guide (see crlaurence.com for details)



Rounded Roller Style



Square Corner Roller Style



Plumbing Fixture Not Included

BASIC ESS1 OR ESS3 KITS INCLUDE THE FOLLOWING:

- Two - Bottom Rollers
 - One - Spanner Wrench for Roller Adjustment
 - One - Top Door Guide
 - One - 64" (1.63 m) Bottom Track
 - One - 98" (2.49 m) U-Channel
 - One - 98" (2.49 m) Plastic L-Seal
 - One - SDCEC12 End Cap for Channel
 - One - M6164 Shower Door Bumper
 - One - 1" (25.4 mm) Long Drain Piece for Track
 - One - 1/16" (1.6 mm) Neoprene Setting Block
- NOTE:** Glass Brackets, Handle or Knob, and Other Accessories Sold Separately

HOW TO ORDER FOR 180 DEGREE WALL-TO-WALL INSTALLATION

1. Order Basic ESS1 or ESS3 Kit in Your Choice of Finish
2. Order Two Each CL90S (Rounded) or GE90S (Square Cornered) Wall Mount Brackets
3. Order Your Choice of Handle or Knob for Door
4. Order Any Other Accessories You May Want for the Enclosure

HOW TO ORDER FOR 90 DEGREE RETURN PANEL INSTALLATION

1. Order Basic ESS1 or ESS3 Kit in Your Choice of Finish
2. Order Two Each CL90S (Rounded) or GE90S (Square Cornered) Wall Mount Brackets, plus Two Each CL090 (Rounded) or GE090 (Square Cornered) 90 Degree Glass-to-Glass Brackets
3. Order Your Choice of Handle or Knob for Door
4. Order Any Other Accessories You May Want for the Enclosure

POLISHED CHROME CAT. NO.	BRUSHED NICKEL CAT. NO.	POLISHED BRASS CAT. NO.	OIL RUBBED BRONZE CAT. NO.	DESCRIPTION
ESS1CH	ESS1BN	ESS1BR	ESS10RB	Basic Rounded Roller Style Essence Kit
ESS3CH	ESS3BN	ESS3BR	ESS30RB	Basic Square Cornered Roller Style Essence Kit
BR4CH	BR4BN	BR4BR	BR40RB	Replacement Rounded Style Bottom Roller
SR4CH	SR4BN	SR4BR	SR40BR	Replacement Square Cornered Bottom Roller
TG4CH	TG4BN	TG4BR	TG40RB	Replacement Top Guide
BT4CH	BT4BN	BT4BR	BT40RB	64" (1.63 m) Replacement Bottom Track
SDCD12BA	SDCD12BN	SDCD12BGA	SDCD120RB	98" (2.49 m) Replacement U-Channel
DK98L	DK98L	DK98L	DK98L	98" (2.49 m) Replacement Clear Plastic L-Seal

NOTE: Glass Brackets, Door Handle or Knob, and Other Items Sold Separately

ESSENCE SERIES

ROLLING SHOWER DOOR SYSTEM (WITH HEADER)

NEW!

- Header System Allows for Use of 3/8" or 1/2" (10 or 12 mm) Thick Tempered Glass (Not Included)
- Header is Supported by Fixed Panel Glass With Attractive Thru-Glass Fittings
- Bottom Rolling System Has Integrated Height Adjustment
- Rollers Include Anti-Derail/Anti-Pinch Guard
- Choice of Rounded or Square Cornered Roller System

Our **NEW** Essence Series Sliding Door System With Header adds to CRL's growing line of modern systems. The Header is supported by the fixed panel glass with the use of attractive thru-glass fittings. The bottom rolling system has an integrated height adjustment for door to vertical jamb alignment. The Bottom Rollers also include an anti-derail/anti-pinch guard feature. Smooth and quiet door operation is the cornerstone of the Essence Series. At the same time, water management is accomplished at the sill via the bottom track, and vertically with the use of a clear L-shape jamb that has a soft seal/bumper.

The Essence Sliding Door System With Header is sold in a Basic Kit that allows 180 degree installations. For 90 degree installations a 90RF Return Fitting must be ordered as well. A choice of rounded or square cornered design rollers allows aesthetic matching to the bathroom surroundings.

This System may be used with 3/8" or 1/2" (10 or 12 mm) thick tempered safety glass. It is stocked in four popular finishes in a choice of 60" or 84" (1.52 or 2.13 m) length Kits. See the important **HOW TO ORDER** section at the bottom right of this page.



Plumbing Fixture Not Included



Rounded Roller Style



Square Corner Roller Style

AVAILABLE IN FOUR STOCK FINISHES



SPECIFICATIONS:

Glass Thickness Range: 3/8" or 1/2" (10 or 12 mm) Thick Tempered Safety Glass (Not Included)

Material: Header Constructed of Aluminum; Bottom Rollers and Top Guide Constructed of Solid Brass;

Bottom Sliding Track and U-Channel Constructed of Aluminum; Clear Plastic L-Jamb

Maximum Door Size: For 3/8" (10 mm) Glass: Do Not Exceed Either 34" (864 mm) Wide or 109 Pounds (49 kg);

For 1/2" (12 mm) Glass: Do Not Exceed Either 34" (864 mm) Wide or 127 Pounds (58 kg);

Basic Kit Fabrication: Notch Required for Bottom Rollers, Holes Required for Top Guide; Holes Required for 180° and 90° Thru Glass Fittings. (see crlaurence.com for details)

POLISHED CHROME CAT. NO.	BRUSHED NICKEL CAT. NO.	POLISHED BRASS CAT. NO.	OIL RUBBED BRONZE CAT. NO.	DESCRIPTION
ESS560CH	ESS560BN	ESS560BR	ESS560RB	60" (1.52 m) Basic 180° Rounded Style Essence Kit With Header
ESS584CH	ESS584BN	ESS584BR	ESS584RB	84" (2.13 m) Basic 180° Rounded Style Essence Kit With Header
ESS760CH	ESS760BN	ESS760BR	ESS760RB	60" (1.52 m) Basic 180° Square Style Essence Kit With Header
ESS784CH	ESS784BN	ESS784BR	ESS784RB	84" (2.13 m) Basic 180° Square Style Essence Kit With Header
BR4CH	BR4BN	BR4BR	BR40RB	Replacement Rounded Style Bottom Roller
SR4CH	SR4BN	SR4BR	SR40RB	Replacement Square Style Bottom Roller
HTG4BN	HTG4BN	HTG4BN	HTG4BN	Top Guide Roller (Brushed Nickel Only -Not Exposed)
FGF4CH	FGF4BN	FGF4BR	FGF40RB	Replacement 180 Degree Fixed Glass Fitting
90RFCH	90RFBN	90RFBR	90RF0RB	90 Degree Return Fitting
ESSH60CH	ESSH60BN	ESSH60BR	ESSH600RB	60" (1.52 m) Replacement Header/Header Cover
ESSH84CH	ESSH84BN	ESSH84BR	ESSH840RB	84" (2.13 m) Replacement Header/Header Cover
BT484CH	BT484BN	BT484BR	BT4840RB	84" (2.13 m) Replacement Bottom Track
SDCD38BA	SDCD38BN	SDCD38BGA	SDCD380RB	98" (2.49 m) Replacement U-Channel for 3/8" (10 mm)
SDCD12BA	SDCD12BN	SDCD12BGA	SDCD120RB	98" (2.49 m) Replacement U-Channel for 1/2" (12 mm)
DK98L	DK98L	DK98L	DK98L	98" (2.49 m) Replacement Clear Plastic L-Seal

NOTE: Door Handle or Knob and Other Items Sold Separately

BASIC 180 DEGREE KIT INCLUDES THE FOLLOWING:

- One - 60" (1.52 m) or 84" (2.13 m) Header
 - One - Pack of Two BWB2 Header Mounting Brackets
 - Two - Bottom Rollers
 - One - Spanner Wrench for Roller Adjustment
 - One - Top Guide/Roller
 - One - 60" (1.52 m) or 84" (2.13 m) Bottom Track
 - One - 98" (2.49 m) U-Channel
 - One - 98" (2.49 m) Plastic L-Seal
 - Two - 180 Degree Fixed Glass Fittings
 - One - SDCEC12 or SDCEC38 End Cap for Channel
 - One - M6164 Shower Door Bumper
 - One - 1" (25.4 mm) Long Drain Piece for Track
 - One - 1/16" (1.6 mm) Neoprene Setting Block
- NOTE:** Handle or Knob and Other Accessories Sold Separately

HOW TO ORDER FOR 180 DEGREE WALL-TO-WALL INSTALLATION

1. Order Basic 180 Degree Kit in Your Choice of Finish
2. Order Your Choice of Handle or Knob for Door
3. Order Any Other Accessories You May Want for the Enclosure

HOW TO ORDER FOR 90 DEGREE RETURN PANEL INSTALLATION

1. Order Basic 180 Degree Kit in Your Choice of Finish
2. Order 90RF 90 Degree Return Fitting in Choice of Finish
3. Order Your Choice of Handle or Knob for Door
4. Order Any Other Accessories You May Want for the Enclosure

SERENITY SERIES

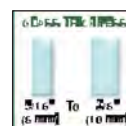
SLIDING SHOWER DOOR SYSTEMS

NEW!



glass
magazine
award
winner

- Unique 180 Degree System With Rollers Above the Header Bar
- System Features One Sliding Door and One Fixed Panel
- Use of Minimal Hardware Gives Door an Almost Floating Appearance
- For 5/16" or 3/8" (8 or 10 mm) Thick Tempered Glass (Not Included)
- Specially Designed Roller Bearings Allow Easy Opening and Closing of Door
- Accessory Kit Available for 90 Degree Return Panels
- Choice of Durable Polished or Brushed Stainless Steel Finishes



Our **NEW** Serenity Series Sliding Door System has an entirely different look from traditional sliding shower door systems. The use of minimal hardware provides a frameless look that gives the enclosure an almost floating appearance. Specially designed roller bearings allow for quiet, easy opening and closing of the door. This unique roller system operates above the header bar that spans the top of the enclosure.

One sliding and one fixed panel make the 180 Degree Standard Kit beautiful and practical. The Kit includes all items pictured at bottom right of the page, with the exception of the 90 Degree Accessory Kit, which is purchased separately (see bottom left of page). The durable polished or brushed stainless steel units will work with 5/16" or 3/8" (8 or 10 mm) thick tempered glass (not included).

SPECIFICATIONS:

Glass Thickness Range: 5/16" or 3/8" (8 or 10 mm) Tempered Safety Glass (Not Included)

Material: Stainless Steel

Maximum Door Size: Do Not Exceed Either 30" (762 mm) Wide or 88 Pounds (40 kg)

Fabrication: Holes Required in Both Door and Fixed Panel (see crlaurence.com for details)

AVAILABLE IN TWO STOCK FINISHES



"Most
Innovative
Bath Enclosure
Product"

BRUSHED STAINLESS CAT. NO.	POLISHED STAINLESS CAT. NO.	DESCRIPTION
SERF2BS	SERF2PS	Standard 180° Kit
SER90BS	SER90PS	90° Accessory Kit
SERH2BS	SERH2PS	78-3/4" (2 m) Header Bar Only
SERR2BS	SERR2PS	Rollers (2 / Pack)
SERS2BS	SERS2PS	Stoppers (2 / Pack)
SERAL2BS	SERAL2PS	Anti-Lift Fittings (2 / Pack)
SERW2BS	SERW2PS	Track Holder Fittings For Wall (2 / Pack)
SERFP2BS	SERFP2PS	Track Holder Fittings For Fixed Panel (2 / Pack)
SERDG2BS	SERDG2PS	Door Guide
SERP2BS	SERP2PS	Thru-Glass Pull



Track Holder Fitting for Wall
is used in conjunction with 90°
Accessory Kit (sold separately)

CAT. NO. SER90
ACCESSORY KIT FOR
90 DEGREE RETURN

Sold Separately

STANDARD 180 DEGREE KIT INCLUDES:

One - 78-3/4" (2 m) Length Header Bar

Two - Rollers

Two - Stoppers

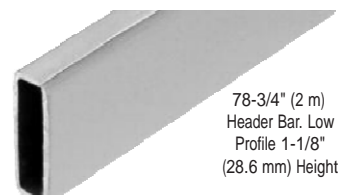
Two - Anti-Lift Fittings

Two - Track Holder Fittings for Wall

Two - Track Holder Fittings for Fixed Panel

One - Thru-Glass Pull

One - Door Guide



78-3/4" (2 m)
Header Bar. Low
Profile 1-1/8"
(28.6 mm) Height



Rollers



Stoppers



Anti-Lift Fittings



Track Holder Fittings
for Wall



Track Holder Fittings
for Fixed Panel



Thru-Glass Pull



Door Guide

SERENITY SERIES

DOUBLE DOOR SYSTEM

- Create an Attractive 90 Degree Double Door Corner System More Easily Than Ever Before
- Simply Purchase Two Serenity 180 Degree Kits and One 90 Degree Double Door Connector Bracket
- V-Corner Design Ideal for Smaller Bathrooms
- Choice of Polished or Brushed Stainless Steel Finishes

Creating a unique and attractive V-Corner shower enclosure is now easier than ever. Simply purchase two 180 Degree Serenity Series Sliding Systems (see opposite page), along with one 90 Degree Double Door Connector Bracket (see below). Combining these parts allows you to build a beautiful double door sliding enclosure even for smaller bathroom areas. A choice of beautiful and durable polished or brushed stainless steel finishes help to match most any modern bathroom décor.

The 90 Degree Double Door Bracket Connector simply connects the two sliding doors in a V-corner. No glass fabrication is required for the Bracket Connector itself. Choice of finishes to match the Serenity Sliding System.

Front View

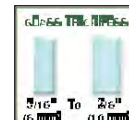
Rear View



90 Degree Door Connector Bracket

CAT. NO. SERC2PS = Polished Stainless
CAT. NO. SERC2BS = Brushed Stainless

NEW!



AVAILABLE IN TWO STOCK FINISHES



Polished Stainless Steel



Brushed Stainless Steel



Note: Each Sliding Door Cannot Exceed 17" (432 mm) in width or 51 Pounds (23 kg)



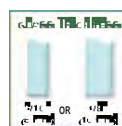
HYDROSLIDE

180° and 90° SLIDING SHOWER DOOR SYSTEMS

AVAILABLE IN FOUR STOCK FINISHES



- Excellent Design for Compact Areas
- Clean, Sleek Lines
- Accommodates a Wide Range of Shower Designs
- Quick and Easy Installation



Hydroslide Sliding Shower Door Kits were designed for full standing showers or above bathtubs. The Hydroslide System can accommodate a wide range of shower designs with fixed glass panels on either end, or both sides at 90 or 180 degrees. The Hydroslide System also accommodates the option of floor-to-near-ceiling glass panels with a sliding door. Hydroslide Sliding Shower Door Kits feature the latest European 'all-glass' look. Kits are available in either 60" (1.52 m) or 84" (2.13 m) widths. Installers can cut the width to size, and height is optional as long as the sliding door glass weighs less than 88 pounds (40 kg).

The 180 Degree Wall-to-Wall Installation only requires the 180 Degree Standard Kit for the installation. The 90 Degree Wall-to-Glass Installation requires the 180 Degree Standard Kit, plus the 90 Degree Wall-to-Glass Accessory Kit. Individual or replacement parts can also be ordered from the next page. Hydroslide Kits come in four finishes: Chrome Fittings with a Brite Anodized Sliding Track, Polished Brass with a Brite Gold Anodized Sliding Track, Brushed Nickel with Brushed Nickel Anodized Sliding Track, and Oil Rubbed Bronze with Oil Rubbed Bronze Anodized Sliding Track. Each Kit comes with complete fabrication and installation instructions.

NOTE: Bottom Fixed Glass Attachments, Handles or Knobs must be ordered separately.

180 DEGREE STANDARD KITS CONSIST OF:

- One - Sliding Glass Door Upper Track
- Two - Hangers for Sliding Glass Door
- Two - Sliding Glass Door Rollers
- Two - Sliding Glass Door Roller Stops
- One - Sliding Glass Door Floor Guide
- Two - 90 Degree Wall-to-Upper Track Connectors
- Two - 180 Degree Glass-to-Sliding Track Connectors
- One - 36" (.91 m) Half-Round SDT980 Threshold
- One - 98" (2.49 m) DK98L L-Seal for Wall

*90 DEGREE WALL-TO-GLASS ACCESSORY KITS CONSIST OF:

- One - 90 Degree Glass-to-Sliding Track Connector
- One - 90 Degree Wall-to-Glass Bracket

*90 Degree Units require that you order one 180 Degree Standard Kit plus one 90 Degree Accessory Kit

180 DEGREE STANDARD KIT 60" (1.52 M) CAT. NO.	180 DEGREE STANDARD KIT 84" (2.13 M) CAT. NO.	90 DEGREE WALL-TO-GLASS ACCESSORY KIT CAT. NO.	FINISH
HYDK60CH	HYDK84CH	HYDA9CH	Brite Anodized/Chrome
HYDK60BR	HYDK84BR	HYDA9BR	Brite Gold Anodized/Brass
HYDK60BN	HYDK84BN	HYDA9BN	Brushed Nickel
HYDK600RB	HYDK840RB	HYDA90RB	Oil Rubbed Bronze

SPECIFICATIONS:

Glass Thickness Range: 5/16" (8 mm) to 3/8" (10 mm) Tempered Safety Glass (Not Included)

Material: Plated or Lacquered Solid Brass Fittings; Anodized Aluminum Sliding Door Track

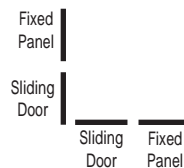
Maximum Door Size: 88 lbs (40 kg)

Fabrication: Holes Required in Fixed Panel and Door

Includes: Gaskets, Screws, and Glass Fabrication Information.

Complete installation instructions along with glass and metal cutting formula available at crlaurence.com.

NOTE: Ask our Shower Door Technical Sales Department about a special Installation using two Hydroslide Kits, along with our HYDH90 90 Degree Bracket to allow two doors to meet at a 90 Degree Corner.



180 Degree Wall-to-Wall Installation
Uses our 180 Degree Standard Kit



90 Degree Wall-to-Glass Installation
Uses our 180 Degree Standard Kit
plus a 90 degree Wall-to-Glass Accessory Kit



SERENITY SERIES



SERENITY SERIES



COTTAGE SERIES



HYDROSLIDE SERIES



COTTAGE CK SERIES

WITH CLEAR SIDE JAMBS

- Utilizes Clear Polycarbonate Side Jambs Instead of Traditional Metal Jambs
- Bolt-Through Top Hangers Provide for Immediate Fabrication and Installation
- Designed for Use With 3/8" (10 mm) or 1/4" (6 mm) Tempered Glass (Not Included)
- Brite Anodized, Brite Gold Anodized, Brushed Nickel, and Oil Rubbed Bronze in Up to Six Stock Sizes
- Custom Units Also Available

Cottage CK Series Bypass Sliders are unique in that they utilize clear polycarbonate side jambs instead of traditional metal side jambs, thus providing more of the popular 'all-glass' look. Bolt-Through Top Hangers allow immediate fabrication and installation, with no waiting for messy adhesive to dry. Cottage Series Kits come in Brite Anodized, Brite Gold Anodized, Brushed Nickel, and Oil Rubbed Bronze finishes, with other finishes available on special order.

The top hung stock units include: Header, Top Hangers for 1/4" (6 mm) or 3/8" (10 mm) glass, Clear Polycarbonate Side Jambs, Bottom Sill, Back-to-Back Knob, 24" (610 mm) Towel Bar, Nylon Rollers, and Bottom Guide. Tempered glass and silicone sealant are supplied by the installer to complete the installation. Since all rollers are overhead, the Bottom Sill and Clear Side Jambs are uncluttered, making cleaning easy. Available in up to six stock sizes. Extrusions, Bottom Guides, Hardware Packages, and other accessories may be ordered separately as well (see next page). Custom units are available.

SPECIFICATIONS:

Materials: Extrusions (Aluminum); Side Jambs (Polycarbonate); Towel Bar (Brass Tubing); Knob (Solid Brass)

For Glass Thickness: 1/4" (6 mm) or 3/8" (10 mm) (Glass not included in Kit)

Include: Aluminum Extrusions, Top Hangers for 3/8" (10 mm) or 1/4" (6 mm), Clear Polycarbonate Jambs, 24" (610 mm) Towel Bar, Knob, Hardware Package, and Installation Instructions

Glass Fabrication: Towel Bar – Two 1/2" (12 mm) Diameter Holes, 24" (610 mm) Center-to-Center;

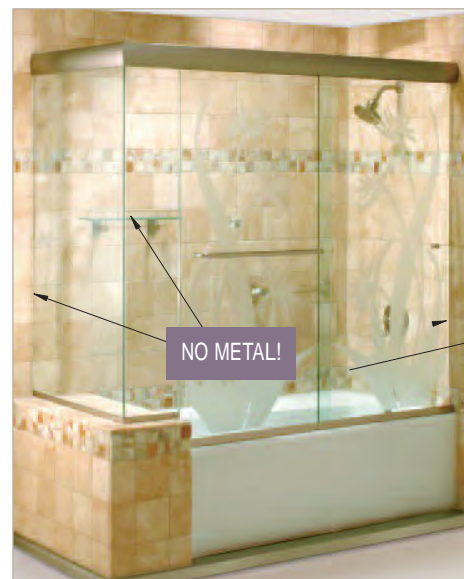
Knob – One 1/2" (12 mm) Diameter Hole; Top Hangers – Four 1/2" (12 mm) Diameter Holes (two per glass panel)

(see crlaurence.com for complete information).

1/4" (6 MM) GLASS* CAT. NO.	3/8" (10 MM) GLASS* CAT. NO.	SIZE (WIDTH X HEIGHT)
CK146060	CK386060	60" x 60" (1.52 m x 1.52 m)
CK146072	CK386072	60" x 72" (1.52 m x 1.83 m)
—	CK386080	60" x 80" (1.52 m x 2.03 m)
CK147260	CK387260	72" x 60" (1.83 m x 1.52 m)
—	CK387272	72" x 72" (1.83 m x 1.83 m)
—	CK387280	72" x 80" (1.83 m x 2.03 m)

* Specify Finish When Ordering

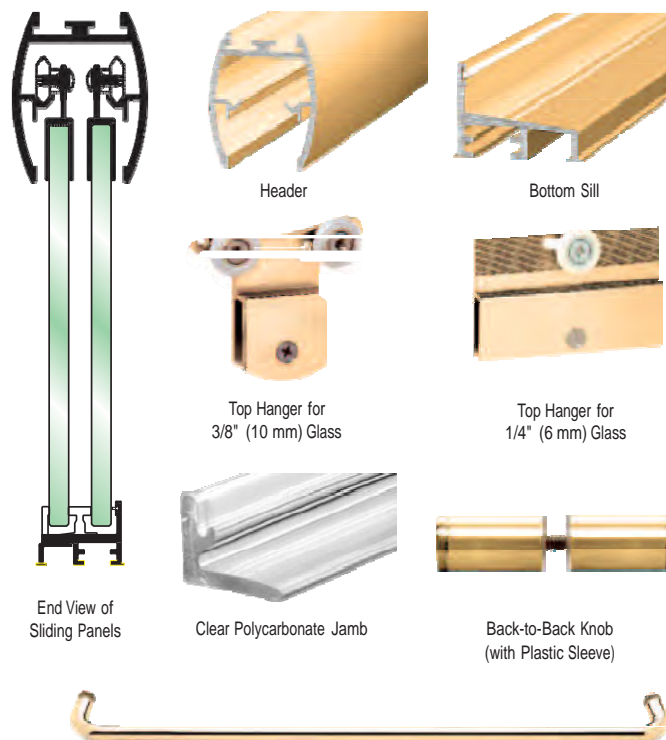
AVAILABLE IN FOUR STOCK FINISHES



Custom 90 Degree Unit Shown

The Clear Jamb System Changes How You View Frameless Sliding Shower Door Kits Because the Vertical Metal is Eliminated

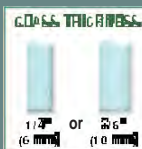
DESIGNED BY C.R. LAURENCE



24" (610 mm) Towel Bar

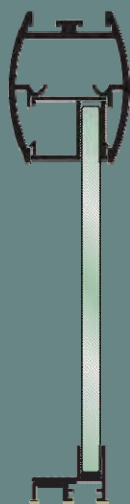
COTTAGE CK SERIES SYSTEM COMPONENTS

- Individual Supplementary Extrusions and Hardware Components to Convert Our Frameless Shower Door Kits Into Angled Enclosures or Wider Inline Units
- Brite Anodized, Brite Gold Anodized, Brushed Nickel, and Oil Rubbed Bronze Finishes to Match Our Kits
- Do It Yourself, or You Can Send Us a Drawing to Customize a Unit for You



CK Series Cottage Components were especially designed by CRL to add versatility to our Frameless Sliding Shower Door Kits. They allow the option of adding additional panels to create a designer enclosure, or simply construct your own sliding unit by combining the various parts. Stock lengths of Headers, Header Fillers, Bottom Sills, Sidelite Sills, and Clear Polycarbonate Vertical Side Jamb, along with Top Hangers and other accessory items round out the available items. Glass is not included.

Use these components to build the enclosure you desire, or even simpler, email or fax us a drawing (with dimensions) of the shower opening and we will put together a customized kit for you that will include everything you will need (except the glass and the silicone). Contact CRL Frameless Shower Technical Sales for details.



End View of Fixed Panel

SPECIFICATIONS:
Materials: Extrusions (Aluminum), Side Jamb Seals (Polycarbonate), Knob (Solid Brass), Towel Bar (Brass Tubing) For Glass Thickness: 1/4" (6 mm) or 3/8" (10 mm) (Glass not included)
Recommended Maximum Slider Sizes:
1/4" (6 mm) Glass: 60" W x 72" H (1.52 x 1.83 m) or 72" W x 60" H (1.83 x 1.52 m); 3/8" (10 mm) Glass: 72" W x 80" H (1.83 x 2.03 m)
Glass Fabrication: See opposite page



Back-to-Back Knob (with Plastic Sleeve) CAT. NO. SDKP112



Towel Bar CAT. NO. BMNW24 = 24" (610 mm)

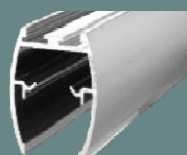
Bottom Sill Filler Extrusion CAT. NO. DK7172

Make your own bottom filler for out-of-level sills

Custom Made Tapered Bottom Sill Fillers

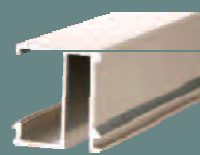
CAT. NO. DK71

Precision-made to order by C.R. Laurence Manufacturing



Header

CAT. NO. DK61 = 72" (1.83 m)
CAT. NO. DK61144 = 144" (3.66 m)



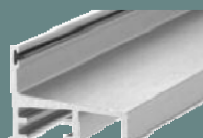
Header Filler

CAT. NO. DK62 = 72" (1.83 m)
CAT. NO. DK62144 = 144" (3.66 m)



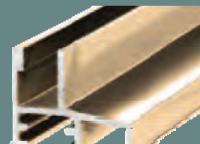
Top Hanger

CAT. NO. DK66 for 3/8" (10 mm) Glass



Bottom Sill

CAT. NO. DK63 = 72" (1.83 m)
CAT. NO. DK63144 = 144" (3.66 m)



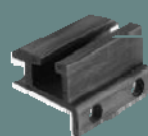
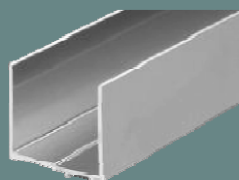
Sidelite Sill

CAT. NO. DK64 = 72" (1.83 m)
CAT. NO. DK64144 = 144" (3.66 m)



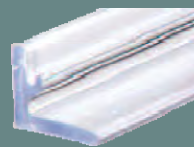
Top Hanger

CAT. NO. DK67 for 1/4" (6 mm) Glass



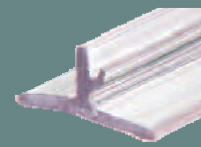
Bottom Guide

CAT. NO. DK6914 for 1/4" (6 mm) Glass
CAT. NO. DK6938 for 3/8" (10 mm) Glass



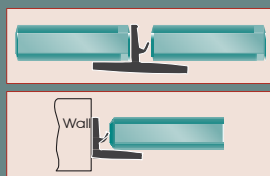
L-Shaped Clear Polycarbonate

CAT. NO. DK98L = 98" (2.49 m)



T-Shaped Clear Polycarbonate

CAT. NO. DK98T = 98" (2.49 m)



Polycarbonates adhere to glass or wall as shown using our Clear Very Hi-Bond Tape (not included).

CATALOG NUMBERS FOR OTHER "CK" SERIES COMPONENTS

COMPONENT DESCRIPTION	BRITE ANODIZED	BRITE GOLD ANODIZED	BRUSHED NICKEL	OIL RUBBED BRONZE
Hardware Package	DK68B	DK68G	DK68B	DK68BL
Back-to-Back Knob	SDKP112CH	SDKP112BR	SDKP112BN	SDKP1120RB
24" Towel Bar	BMNW24CH	BMNW24BR	BMNW24BN	BMNW240RB